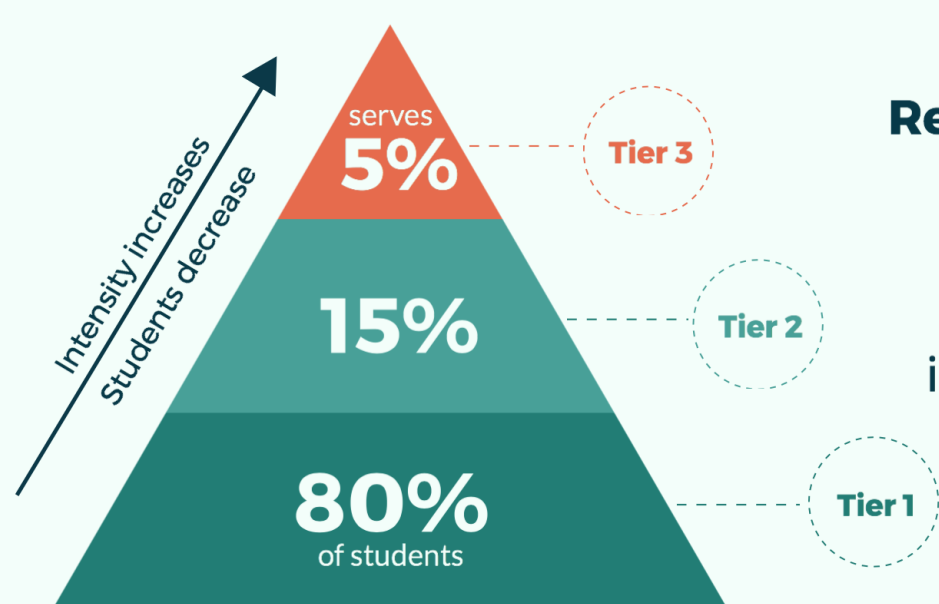


Response to Intervention: What You Need to Know

1. What is Response to Intervention?



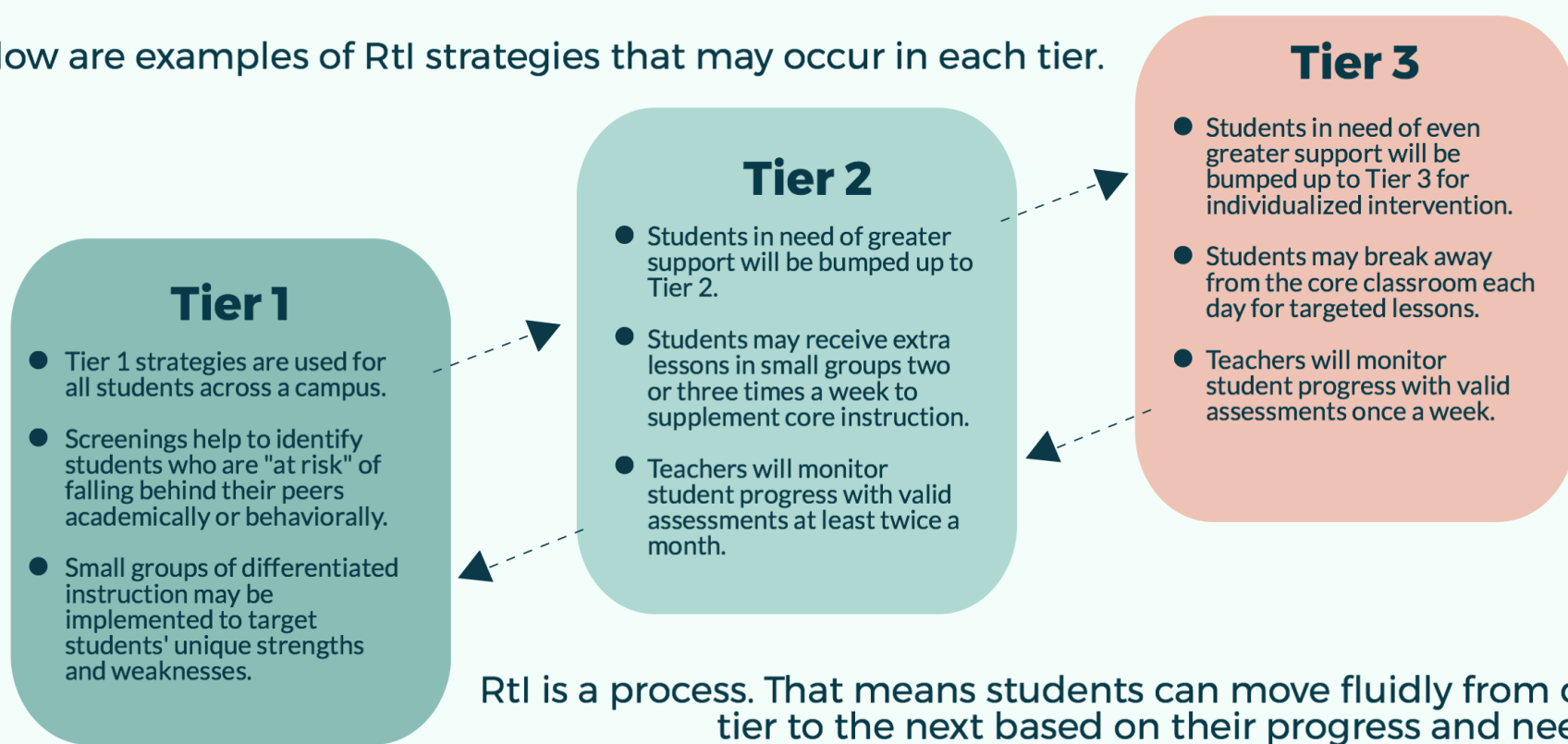
Response to Intervention (or RtI)

is a data-driven, multi-tiered system of support that is designed to help struggling learners in general education settings.

2. What do services look like in each RtI tier?

RtI processes and tiers look differently at each school campus. Local leaders can adapt the tiers to fit their unique student body's needs. For example, some districts may even use more than three tiers of RtI services.

Below are examples of RtI strategies that may occur in each tier.



Source: Understood, "At a Glance: Three Tiers of RtI Support," <https://www.understood.org/en/school-learning/special-services/rti/at-a-glance-3-tiers-of-rti-support>.

3. What information must schools provide about RtI?

When school officials move a child from Tier 1 to a higher service level, they must notify parents with the following information:



Passed in 2017, Senate Bill 1153 by Senator José Menéndez created these requirements. See the text of the bill at <http://www.capitol.state.tx.us/BillLookup/Text.aspx?LegSess=85R&Bill=SB1153>.

4. When can you make a special education referral?

You can request a special education evaluation at any time during the RtI process.

In some school districts, administrators have required students to pass through each tier of RtI before teachers or other stakeholders could make a special education referral.

This practice directly violates guidance from the Department of Education and should no longer occur in public schools. RtI strategies cannot be used to delay or deny special education evaluations.

If you suspect a disability, you can request an evaluation at any time.



Source: M. Musgrove to State Directors of Special Education, OSEP Memorandum No. 11-07, Jan. 21, 2011, <https://www2.ed.gov/policy/speced/guid/idea/memosdcltrs/osep11-07rtimemo.pdf>.